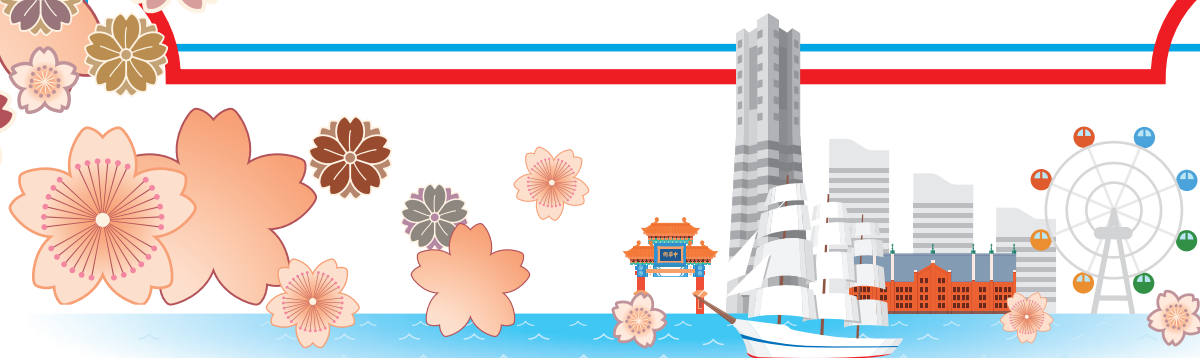


JAPANESE LANGUAGE AND CULTURE PROGRAM



神奈川大学 日本語・日本文化プログラム

SUMMER

Jun 19[Fri]–Jul 24[Fri], 2020

APPLICATION PERIOD: Nov 1[Fri], 2019 – Feb 28[Fri], 2020

WINTER

Jan 8[Fri]–Feb 12[Fri], 2021

APPLICATION PERIOD: Jul 1[Wed]–Sep 30[Wed], 2020

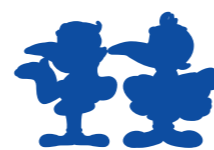


Overview of Yokohama and major sightseeing spots

Yokohama is located in the center of Japan, along the coastline of the Pacific Ocean, and one of the 20 Japanese Government-designated cities. The average temperature is 32°C with high humidity in the summers and 5.9°C with low humidity in the winters. The total population is 3.7 million, making the city the second largest after Tokyo's 23 Wards. A number of foreign enterprises have established their branches in Yokohama to take full advantage of its international trading port. Yokohama citizens are very proud of living here because it is not only very famous as a tourist mecca, but also has every urban function including, but not limited to, business and culture.

Kanagawa University

Kanagawa University is committed to creating a more attractive academic environment in every dimension of campus life, from education and research to social contribution. With its Yokohama and Shonan Hiratsuka Campuses, Kanagawa University is a comprehensive university with eight undergraduate faculties consisting of 22 departments and two programs, and eight graduate schools offering 10 courses. Students can choose to major in any of a large number of disciplines in the humanities and sciences. Yokohama campus is a functional and beautiful campus, in a location with convenient access to the Yokohama station area, Minatomirai area and Shibuya, Tokyo.



International Center

The International Center provides advice and procedural support to students who wish to study abroad on exchange or on a language course. The center also supports student life of international students and exchange students. In order to get accustomed to life in Japan, the center provides services including Japanese language study support, everyday life counseling, a buddy program for new students, events related to international students and language exchange.



Experience Japan~New and Old~in **Yokohama!**

Study Japanese language and culture in Yokohama!

Program

Focusing on Japanese language study, the program's objective is to improve Japanese proficiency and deepen understanding of both traditional Japanese culture and various aspects of contemporary Japan by taking classes related to Japan, going on fieldtrips and having the opportunity to directly experience the tea ceremony, Ikebana (Japanese Flower Arrangement), and so forth. Opportunities to interact with Kanagawa University students have also been incorporated into the program.

Lectures About Japan

- Lectures about Japan in English
- Japanese Pop Culture, History, Economics and Politics etc.
- Including a discussion between KU students and Japanese students



Message from Past Student



The topics of the lectures were diverse and interesting, affecting various aspects of Japanese society and culture. I was absolutely amused with the lecture about Rakugo. It was very funny. (O.S Latvia)

Japanese Language Classes

1. Aim: To improve oral communication ability through conducting interviews around campus or in the local shopping area to learn real, living Japanese
2. Target participants: Absolute beginner – pre-intermediate (N3/Level 3 or less in Japanese Language Proficiency Test) Beginners are welcome, however those who have no knowledge of Japanese characters must learn hiragana and katakana before joining the program.
3. Class Outline:
 - Class Hours: Mon ~ Fri, 3 hours/day, approx.74 hrs. in total
 - Class Numbers: Approx. 15 students/class
 - Sample Schedule: Please check the below URL for details
URL :http://www.kanagawa-u.ac.jp/english/admissions/japanese_language.html
 - Placement Test: This will be held on the first day of the program in order to ensure that each participant is able to study in a class of the appropriate level.
 - All students receive a final grade report.



Beginners are welcome!

Message from Past Student



This program provide a natural, encouraging and interactive environment for participants to learn Japanese. I was able to improve my language proficiency while having fun in class!!! (C.C HongKong)

Course Structure

Level	CEFR	Achievement Target
Introductory (Applicants are asked to learn how to write hiragana and katakana before arriving in Japan)	A1	<ol style="list-style-type: none"> 1. To be able to make basic greetings 2. To be able to do a simple self-introduction 3. To be able to explain or provide a simple opinion about familiar topics 4. To be able to explain simply what one has done or plans to do 5. To be able to ask simple questions
Beginner (Lower)	Lower A2	<ol style="list-style-type: none"> 1. To be able to make a more detailed self-introduction 2. To be able to describe familiar topics and express impressions 3. To be able to explain situations and actions in the past, present and future 4. To be able to express supposition, hearsay, wishes and experience 5. To be able to make simple requests or provide simple advice
Beginner (Upper)	Upper A2	<ol style="list-style-type: none"> 1. To be able to talk about the characteristics of people and things 2. To be able to explain simple rules or provide advice 3. To be able to explain sequence, cause and effect 4. To be able to talk about changes in situation or completion of an action 5. To be able to talk about past episodes using passive speech
Pre-intermediate	Lower B1	<ol style="list-style-type: none"> 1. To be able to decline an offer by explaining a reason 2. To be able to speak about experience or memories with the inclusion of expressing feelings of gratitude 3. To be able to express potential or expectations for the near future 4. To be able to express a negative question 5. To be able to respond with polite expressions



Hands-on Experience of Japanese Culture

- Interactive courses on Japanese culture in English
- Ikebana (Japanese Flower Arrangement), Japanese Tea Ceremony, Calligraphy, Japanese Architecture and Kabuki (Japanese Traditional Theater) etc.

Message from Past Student



I had the wonderful opportunity to create my own ikebana while wearing a beautiful yukata. The experience allowed me to further understand Japanese traditions and immerse myself in the culture. (A.M USA)



Message from Past Student



I found so many interesting boutiques and specialty shops in Tokyo. It was the beautiful view in the fireworks festival. I also watched Kabuki and learned more about traditional Japanese culture. (Y.T China)

Visits

- Company and school visits



Weekend Activities

- Offered on weekends without extra fee
- The activities may include visits to see and experience culture in Tokyo etc.



Buddies

- KU students, as volunteer buddies, introduce participants to life on campus as well as provide assistance with daily life in Japan outside of class. The participants can practice everyday conversation and at the same time make friends with them.



Message from Past Student



All Buddies are friendly, and will not only help you improve your Japanese skills, but will also make you happy memories through a variety of experiences. (Y.K Korea)

General Information

Eligibility

- 18 years old and over on the first day of the program
- Those who are enrolled in an undergraduate course (Equivalent to Japanese university's 4-year degree courses) or who have obtained a "Bachelor's degree" (Those who have graduated high school are not eligible to apply.)
- Japanese language level of N3 or less
- Those who have the English capability to follow a lecture in English (Hands-on Experience of Japanese Culture and Lectures about Japan are conducted in English.)
- Those who can be insured with overseas travel insurance stipulated by Kanagawa University (overseas applicants only)
- Those who can arrange their own visa, if necessary (We will send you an acceptance letter after you are accepted.)

Program Places

- 50 students (for each program)

Important Dates

Schedule	2020 Summer	2021 Winter
Application Period Begins	Nov 1, 2019	Jul 1, 2020
Application Deadline	Feb 28, 2020	Sep 30, 2020
Arrival Date	Jun 18, 2020	Jan 7, 2021
Program Starts	Jun 19, 2020	Jan 8, 2021
Program Ends	Jul 24, 2020	Feb 12, 2021

How to Apply

Please check the below URL for details

URL: http://www.kanagawa-u.ac.jp/english/admissions/japanese_language.html

*Submitted documents will not be returned for any reasons.

*Students from the partner universities should consult with the international department of their universities.

How to Pay

Program Application Fee (Non refundable)	JPY 30,000
Program Participation Fee	JPY 130,000

(Not including round-trip air fare, meals, housing, living expenses, transportation expenses, insurance fee, medical expenses etc.)

[Note]

Payment in Japanese yen must be completed by wire transfer to the bank account stated on the invoice by the payment deadline. All bank handling charges, at both sending and receiving ends, must be paid by the sender. Please write name of applicant in the message field on the bank transfer sheet. Credit card payment is not accepted.

Cancellation Policy

Please check the below URL for details

URL: http://www.kanagawa-u.ac.jp/english/admissions/japanese_language.html

Homestay

KU helps students arrange homestay accommodation. Please fill out the application form if you want to apply for Homestay accommodation through KU.

You can stay in a typical Japanese home and learn firsthand about Japanese culture and everyday customs. 2 meals (breakfast and dinner) will be provided 7 days a week.

Fee	JPY 126,600+tax (Including placement fee)
-----	---

Dormitory and shared house etc.

If you are interested in staying in a dorm, shared house etc. please make accommodation arrangements by yourself. KU will send you the information sheets in advance.

Please check the below URL for details

URL: http://www.kanagawa-u.ac.jp/english/admissions/japanese_language.html

Travel Insurance

Program participants must, as a condition of participation, purchase an overseas travel insurance policy designated by Kanagawa University. Please check Article 6 of the Pledge regarding insurance policy coverage in the Application Form (online).

Please check the below URL for details

URL: http://www.kanagawa-u.ac.jp/english/admissions/japanese_language.html

Visa

In the case that you need a visa to enter Japan for a short-term stay, as is mentioned in the Eligibility section, you must complete the application procedures yourself. We will send you any documents necessary for the visa application after participation has been confirmed.

Contact

International Center Yokohama Campus, Kanagawa University

3-27-1 Rokkakubashi, Kanagawa-ku, Yokohama, Kanagawa, 221-8686 Japan
Tel: 045-491-1701 (from overseas +81-45-491-1701) (direct)
Fax: 045-481-6011 (from overseas +81-45-481-6011)
E-mail: intl-japaneseprogram@kanagawa-u.ac.jp
Full details including regarding application can be found at the website below:

http://www.kanagawa-u.ac.jp/english/admissions/japanese_language.html

 [kujapaneseprogram](https://www.facebook.com/kujapaneseprogram)

