

# Soka University Fact Sheet 2019-2020

## General & Contact Information

<b>Country</b>	Japan
<b>City</b>	Hachioji, Tokyo
<b>Year of Founding</b>	1971
<b>Type of Institution</b>	Private
<b>Majors (Undergraduate)</b>	Economics, Business Administration, Law, Letters, Education, Science and Engineering, Nursing, International Liberal Arts
<b>Office Address</b>	Soka University International Affairs Office 1-236, Tangi-machi, Hachioji-Shi Tokyo, Japan 192-8577
<b>Office Telephone / Fax</b>	+81-42-691-8200/ +81-42-691-2039
<b>English Homepage</b>	<a href="http://www.soka.ac.jp/en/">http://www.soka.ac.jp/en/</a>

## Application Deadlines for Inbound Exchange

<b>2019 Fall semester (September, 2019- January, 2020)</b>	March 29 <sup>th</sup> , 2019
<b>2020 Spring semester (April-July, 2020)</b>	End of October, 2019

## Fall Semester Dates (September 2019-January 2020)

\* subject to change

<b>Arrival date/Airport Pickup</b>	Early-September, 2019
<b>Move-in date</b>	Early-September, 2019
<b>Orientation starts</b>	Early-September, 2019
<b>Classes start</b>	Mid-September, 2019
<b>Completion ceremony</b>	Late-January, 2020
<b>Move-out date</b>	By Mid-February, 2020

## Spring Semester Dates (April-July 2020) \* subject to change

<b>Arrival date/Airport Pickup</b>	Late-March, 2020
<b>Move-in date</b>	Late-March, 2020
<b>Orientation starts</b>	Early-April, 2020
<b>Opening ceremony</b>	April 2 <sup>nd</sup> , 2020
<b>Classes start</b>	Mid-April, 2020
<b>Completion ceremony</b>	Late-July, 2020
<b>Move-out date</b>	By Mid-August, 2020

## Study Area & Course registration

<b>Minimum &amp; Maximum Credits per a semester</b>	Minimum 10 hours (600 minutes) of class (at least 7 classes) per week.
<b>Language course for exchange students</b>	ES, E0, E1, E2, E3, E4, and E5. Only E4 and E5 level students can take Undergraduate courses.
<b>Language course hours per a week</b>	At least 10 hours (600 minutes) of class (at least 7 classes) per week. 1 to 2 credits depending on the course.

Students who have N2 level or above are eligible to enroll in some elective classes taught in Japanese on the Course Registration Orientation lists.

Students who have TOFEL iBT 71 or above are eligible to enroll in some elective classes taught in English on the Course Registration Orientation lists. All students are eligible to enroll in Japanese-language courses and Physical Education courses.

Japanese Language courses are categorized into seven proficiency classes: ES, E0, E1, E2, E3, E4, and E5. ES level class provides minimal but necessary Japanese language studies to live in Japan. It is designed for students who would like to take courses mainly in English. E0 level class is also a basic level class but designed for those who would like to mainly learn Japanese.

Students going-on to their first semester: Level of class will be chosen, based on the results of your placement test.

Students going-on to their second semester and on: You will be placed in the subsequent class this semester. For example, students who were E0 will proceed to E1. Students who were in E5, will remain in E5.

## Course Information

### **Japanese Language Courses:**

<https://www.soka.ac.jp/en/academics/japan-studies-center/non-degree/japanese-courses>

### **Elective Courses:**

[https://www.soka.ac.jp/files/ja/20181009\\_134842.pdf](https://www.soka.ac.jp/files/ja/20181009_134842.pdf)

### **Syllabus:**

<http://plas.soka.ac.jp/csp/plas/syllabus11.csp>

## Admission Procedure flow (after Acceptance)

※ Documents to submit will be sent to each student upon acceptance.

All dates are subject to change

**(Before Arrival)**

### **1<sup>st</sup> step**

① Dormitory Application Form

**(Fall estimated deadline: Mid-June, 2019)**

**(Spring estimated deadline: Mid-January, 2020)**

### **2<sup>nd</sup> step**

① Arrival Information

② Immunization Questionnaire for Measles

**(Fall estimated deadline: Early-July, 2019)**

**(Spring estimated deadline: Early-February, 2020)**

- Students will report Arrival Date, Sign up for Airport Pickup  
**(Fall: Mid-July, 2019)**  
**(Spring: Mid-January, 2020)**
- Students will receive notification on Dormitory Placement, Acceptance Letter, and Certificate of Eligibility  
**(Fall: Late-July to August 2019)**  
**(Spring: Late-January to February 2020)**
- Airport Pickup  
**(Fall: Early-September, 2 days)**  
**(Spring: Late March, 2 days)**

**(Upon Arrival)**

### **3<sup>rd</sup> step**

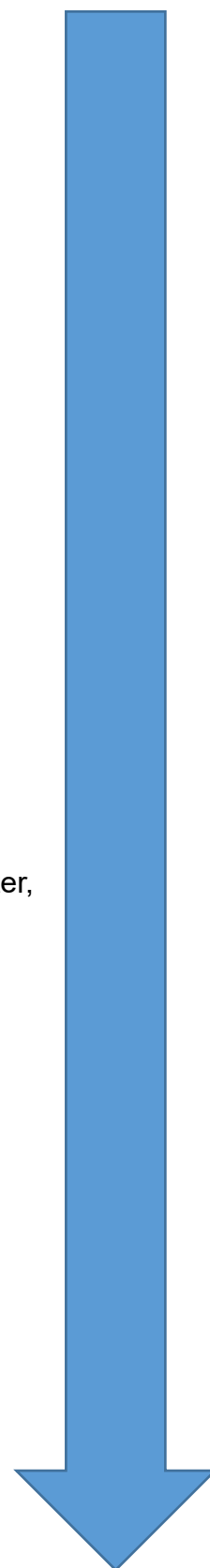
① Agreement on Handling Personal Information at Soka University

② Dormitory Terms of Agreement

③ Passport and Residence Card copies

**Submission method**

**Submit to: [outbound@soka.ac.jp](mailto:outbound@soka.ac.jp)**



# Campus Guide

## Cafeterias on Campus

New Prince Hall  
New Loire Hall  
Central Tower 13<sup>th</sup> floor

## Students also have access to food at:

Gran café 4<sup>th</sup> floor of Global Square  
Convenience Store inside Global Square as well as Student Hall \*Some Halal foods available  
SUBWAY in Student Hall 2<sup>nd</sup> floor

**\*All meals are approximately 250-500JPY**

## Other services:

ATMs are available on the 1<sup>st</sup> floor of Student Hall.  
Health Center available on B1 floor on the East wing of the Global Square for all students.  
Gym facilities are available for students on the 3<sup>rd</sup> floor of the Gymnasium.

# International Dormitories

## On International Dormitories

Soka University provides dormitories (fee exempt) for exchange students, however, those willing to live in a different place will have to pay the expenses on their own.

## Dormitory Rules

Each dormitory has its own rules on curfew, shower time, cleaning time, etc.

## Bedding and Furniture

Each dormitory rooms will come furnished with bedding.

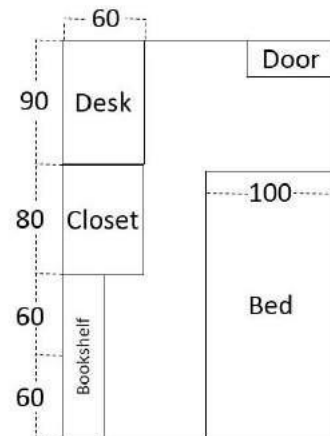
## Eating at the dormitories (male dormitories only)

Only male dormitories (Hoyu and Takiyama International dormitories) include cafeterias inside. Exchange students living in these dormitories preferring to eat in the cafeterias may purchase meal tickets at the Certificate Issuing Machine at the university after their arrival, on the monthly cost of 22,000 JPY for breakfast and dinner (from Mondays to Saturdays). Students in dormitories without cafeterias have access to cafeterias on campus and kitchen space in the living rooms of each dormitory.

## 【International Female Dormitories】

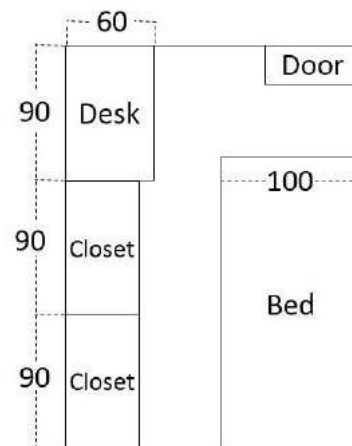
### ● Cosmos Dormitory (Maximum capacity: 80 students)

- ◆ **Western style room**                      ◆ **Single room**
- ◆ **Bedroom furniture:** Bed, closet, chest, desk, chair, bookshelf
- ◆ **Joint facilities:** Bath room, toilet, kitchen (IH stove, microwave oven, fridge, rice cooker), meeting room, lounge, Japanese style room, coin laundry machine and dryer, air conditioner
- ◆ **Address:** 1-582-1 Takiyama-cho, Hachioji-shi, Tokyo (outside campus - 20 minutes on foot)



### ● Sunflower Hall (Maximum capacity: 40 students)

- ◆ **Western style room (carpet)**                      ◆ **Single room**
- ◆ **Bedroom furniture:** Bed, closet, chest, desk, chair, bookshelf
- ◆ **Joint facilities:** Bath room, toilet, kitchen (gas stove, microwave oven, fridge, rice cooker), meeting room, lounge, Japanese style room, coin laundry machine and dryer, air conditioner
- ◆ **Address:** 3-101-1 Tangi-machi, Hachioji-shi, Tokyo (outside campus, 15 minutes on foot)



## 【International Male Dormitories】

### ● Hoyu Dormitory Intl. Block (Maximum capacity: 64 students)

◆ Western style room

◆ Twin room

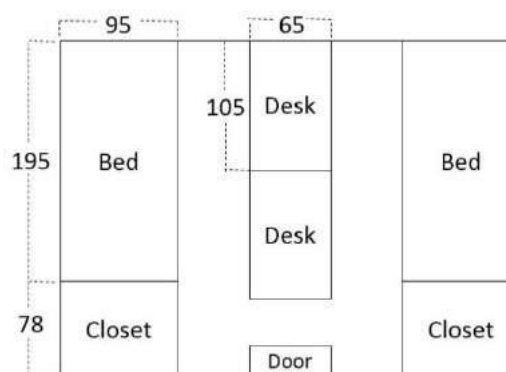
◆ **Bedroom furniture:** Bed, closet, chest, desk, chair, bookshelf, air conditioner

◆ **Joint facilities:** Bathroom (shower and tub), toilet, cafeteria, kitchen, (induction stove, microwave, fridge), meeting room, lounge, Japanese style room, coin laundry machine and dryer, air conditioner

◆ Cafeteria

※There is no meal service in the cafeteria in March and in August

◆ **Address** 1-483 Takiyama-cho, Hachioji-shi, Tokyo (outside campus - 20 minutes on foot)



### ● Takiyama Intl. Dormitory (Maximum capacity: 400 students)

◆ Western style room

◆ Single room

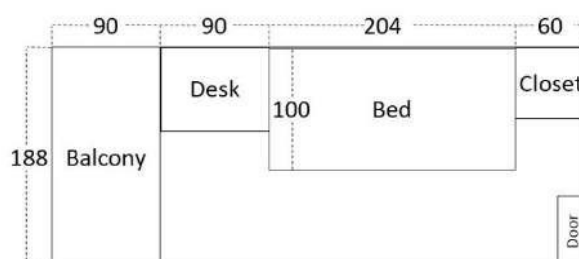
◆ **Bedroom furniture:** Bed, closet, chest, desk, chair, bookshelf, air conditioner

◆ **Joint facilities:** Bathroom, toilet, dining room, kitchen (microwave, fridge), multipurpose room, meeting room, lounge, coin laundry machine and dryer, air conditioner

◆ Cafeteria

※There is no meal service in the cafeteria in March and in August

◆ **Address:** 1-236 Tangi-machi, Hachioji-shi, Tokyo (Located on Campus)





## SOKA UNIVERSITY

1-236 Tangi-machi, Hachioji City, Tokyo, 192-8577 Japan

Tel : +81-42-691-2215 Fax : +81-42-691-9300

- About 25 minutes ( 6 kilometers ) by bus from the north exit of Hachioji Station, which is roughly 50 minutes from Shinjuku Station by JR Chuo Line or Keio Line.
- About 2 kilometers northwest of the Hachioji Interchange on the Chuo Expressway.

Contact [outbound@soka.ac.jp](mailto:outbound@soka.ac.jp)  
[intloff@soka.ac.jp](mailto:intloff@soka.ac.jp)